

from Booklet #283

Love Berroco patterns? Sign up for our **KnitBits®** newsletter.

Free Pattern

skill level: Intermediate

One size

finished measurements

Approximately 20" wide (at widest point) x 64" long

materials

6 hanks **BERROCO CAPTIVA** (50 grs).

Originally shown in Berroco Seduce (discontinued).

Straight knitting needles, size 7 (4.50 mm) OR SIZE TO OBTAIN GAUGE

gauge

20 sts = 4"; 28 rows = 4" in St st

TO SAVE TIME, TAKE TIME TO CHECK GAUGE



Berroco Captiva™



*Find this yarn
at your LYS*

Our supercharged store locator goes above and beyond the ordinary. Innovatively linked to our inventory system, search for a yarn in your area and you'll pinpoint LYS's that have a proven history of ordering that product. A handy listing of all of the Berroco yarns the store carries and easy access to driving directions are also right at your finger tips. *Find all yarns now.*

Don't forget to connect with us on social media!



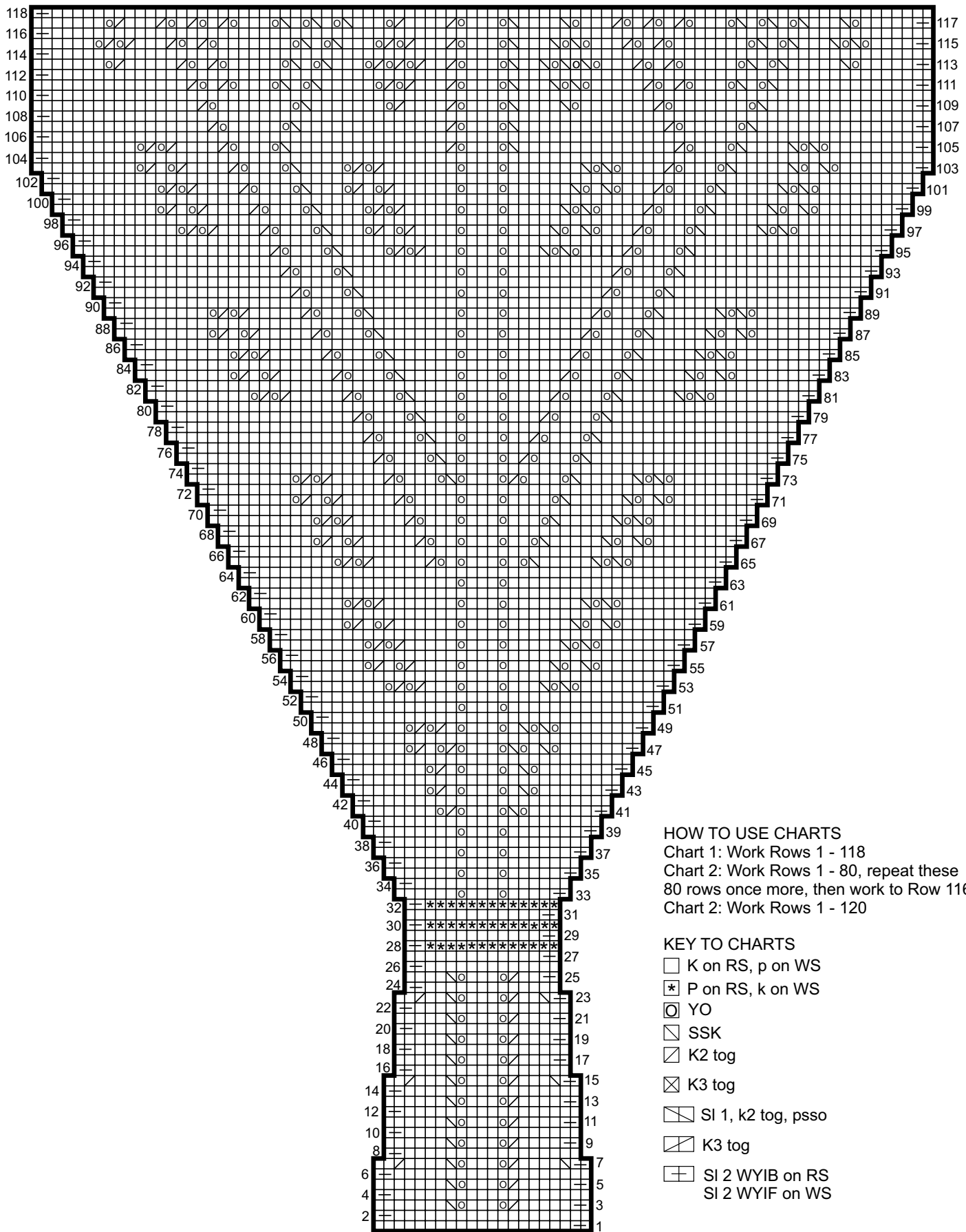
NOTE: We recommend using yarns called for in our instructions. Every effort has been made to ensure that directions contained in this book are accurate and complete, however errors do occur. We cannot be responsible for variance of individual knitters, human or typographical errors.

All pattern PDFs are updated when corrections are made. In the event of finding an error, please make sure you've downloaded the most recent version.

SHAWL

With straight needles, cast on 21 sts. Follow Chart 1 until 118 rows have been completed. Follow Chart 2 until 80 rows have been completed, repeat Rows 1 – 80 once more, then work to Row 116. Follow Chart 3 until 120 rows have been completed, end on WS. Bind off.





HOW TO USE CHARTS

- Chart 1: Work Rows 1 - 118
- Chart 2: Work Rows 1 - 80, repeat these 80 rows once more, then work to Row 116
- Chart 2: Work Rows 1 - 120

KEY TO CHARTS

- K on RS, p on WS
- P on RS, k on WS
- YO
- SSK
- K2 tog
- K3 tog
- SI 1, k2 tog, pss0
- K3 tog
- SI 2 WYIB on RS
SI 2 WYIF on WS

CHART 1

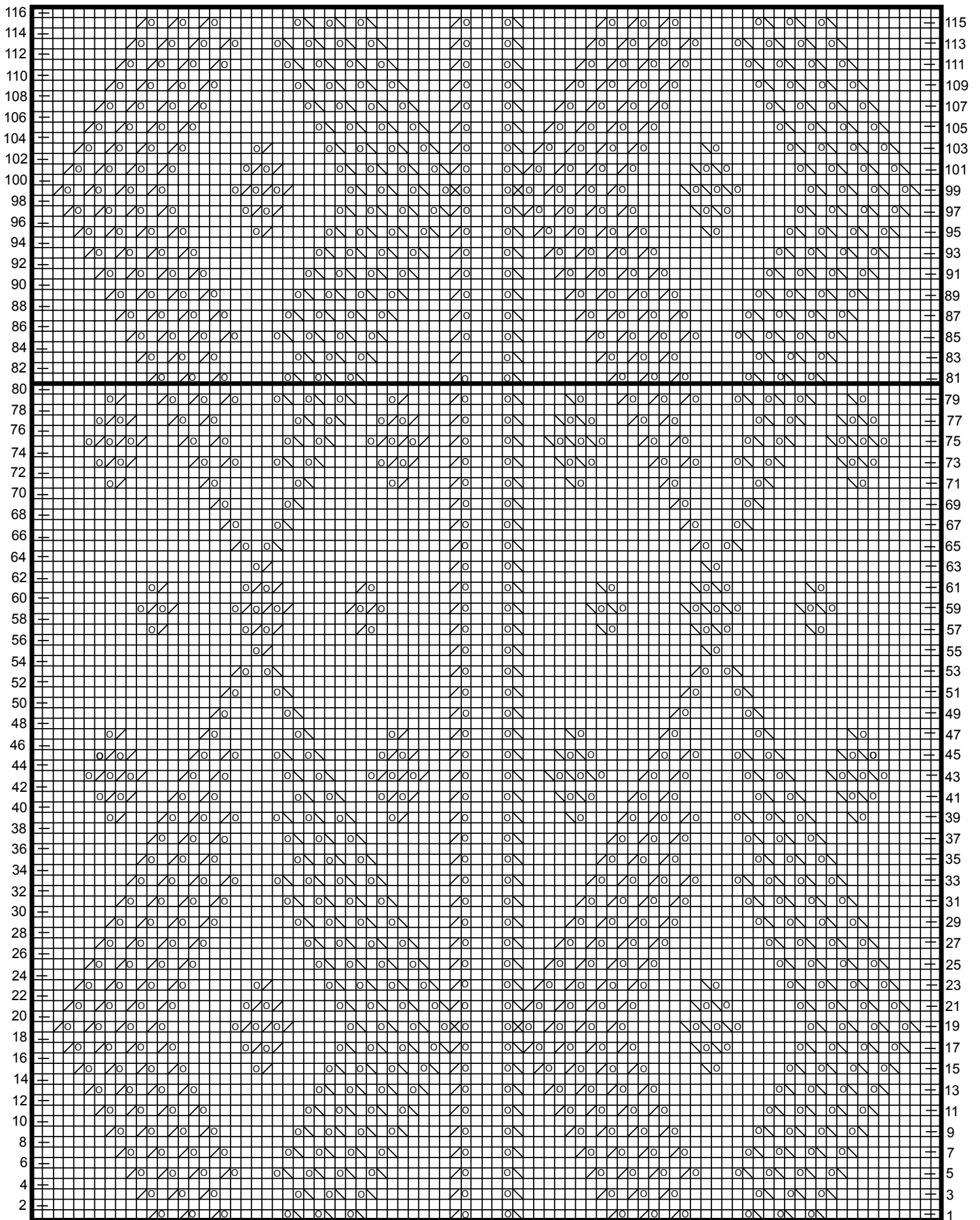


CHART 2

HOW TO USE CHARTS

Chart 1: Work Rows 1 - 118

Chart 2: Work Rows 1 - 80, repeat these

80 rows once more, then work to Row 116

Chart 2: Work Rows 1 - 120

KEY TO CHARTS

- K on RS, p on WS
- P on RS, k on WS
- YO
- SSK
- K2 tog
- K3 tog
- Sl 1, k2 tog, pss0
- K3 tog
- Sl 2 WYIB on RS
Sl 2 WYIF on WS

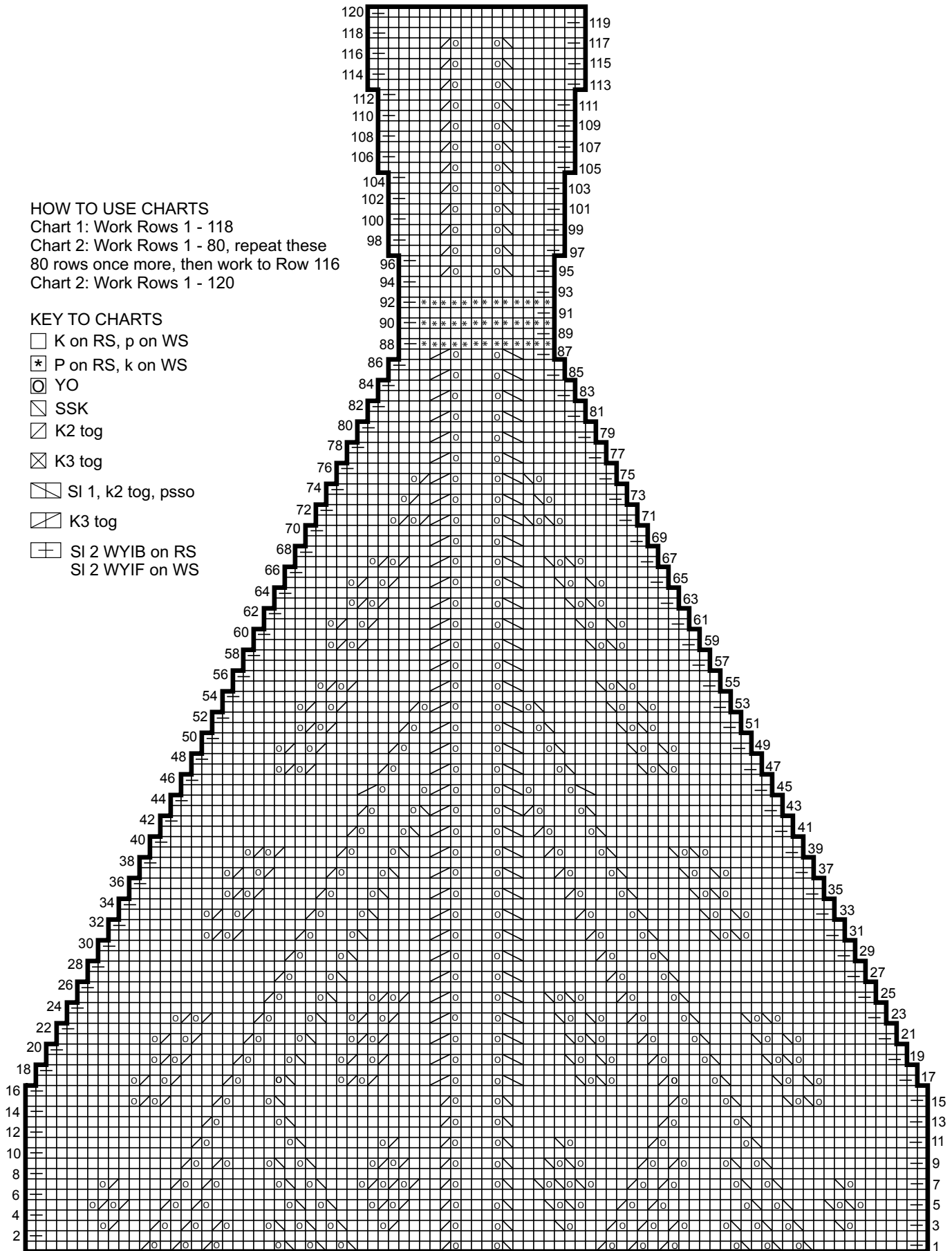


CHART 3

ABBREVIATIONS & TERMS

Knit

beg: beginning

CC: contrasting color

cdd (centered double decrease): Slip 2 together, knit 1, pass the 2 slipped stitches over.

cn: cable needle

cont: continue

dec: decrease

dpn: double pointed needles

est: established

inc: increase

K: knit

k tbl: knit through the back loop(s)

k2tog: Knit 2 stitches together

k3tog: Knit 3 stitches together

LH: left hand

MC: main color

M1: Pick up horizontal strand between stitch just worked and next stitch from front to back, place on left hand needle, knit this stitch through the back (1 stitch increased).

M1L: Work as for M1.

M1p: Pick up horizontal strand between stitch just worked and next stitch from front to back, place on left hand needle, purl this stitch through the back (1 stitch increased).

M1pL: Work as for M1p.

M1pR: Pick up horizontal strand between stitch just worked and next stitch from back to front, place on left hand needle, purl this stitch through the front (1 stitch increased).

M1R: Pick up horizontal strand between stitch just worked and next stitch from back to front, place on left hand needle, knit this stitch through the front (1 stitch increased).

p: purl

p tbl: purl through the back loop(s)

pat(s): pattern(s)

pm: place marker

pssso: pass slip stitch over knit stitch

p2tog: purl 2 stitches together

p2sso: pass 2 slip stitches over knit stitch

p3tog: purl 3 stitches together

rem: remaining

rep: repeat

RH: right hand

rnd(s): round(s)

RS: right side

sl: slip

sm: slip marker

SSK: Slip 2 stitches knitwise, insert point of left hand needle through fronts of these 2 stitches and knit 2 together.

SSP: Slip 2 stitches knitwise, transfer these 2 stitches back to left hand needle, purl 2 together through the back loops.

st(s): stitch(es)

TBL: through back loop(s)

tog: together

WS: wrong side

wyib: with yarn in back

wyif: with yarn in front

yo: yarn over

end on WS: end having just completed a Wrong Side row.

end on RS: end having just completed a Right Side row

STOCKINETTE ST (St st): Knit 1 row, purl 1 row alternately when working on straight needles. The knit side is the right side of work. Knit EVERY round when working in the round on a circular needle.

Reverse St st (Rev St st): Purl 1 row, knit 1 row alternately when working on straight needles. The purl side is the right side of the work. Purl EVERY round when working in the round on a circular needle.

GARTER ST: Knit EVERY row when working on straight needles. Knit 1 round, purl 1 round when working on a circular needle.

Crochet

ch: chain

dc: double crochet

hdc: half double crochet

sc: single crochet

sl st: slip stitch

sp: space

tr: treble