

# Mira

Berroco - Mira

Designed by Amy Christoffers



**skill level:** Intermediate  
One size

**finished measurements**  
Approximately 19" around x 11"  
high (unstretched, not including  
pompon)

**materials**  
1 hank each **BERROCO ABODE**  
(50 grs), #8806 Inkwell (MC), #8802  
Flagstone (CC1), #8800 Natural  
(CC2) and #8830 Golden (CC3)  
16" length circular knitting needle,  
size 6 (4.00 mm) OR SIZE TO OBTAIN  
GAUGE

1 set (4) double pointed knitting  
needles (dpns), size 6 (4.00 mm)  
1 st marker  
Tapestry needle

**gauge**  
20 sts and 26 rnds = 4" in St st,  
working charted pat  
TO SAVE TIME, TAKE TIME TO CHECK  
GAUGE

*Berroco Abode™*

Find this Yarn 

 **BERROCO®**  
www.berroco.com

Love Berroco patterns?  
Sign up for our **KnitBits®** newsletter.



**NOTE:** We recommend using yarns called for in our instructions. Every effort has been made to ensure that directions contained in this book are accurate and complete, however errors do occur. We cannot be responsible for variance of individual knitters, human or typographical errors.

All pattern PDFs are updated when corrections are made. In the event of finding an error, please make sure you've downloaded the most recent version.

## NOTE

When changing colors, hold yarn to the left and pick up new color from underneath. This twists yarn so there are no holes. Do not carry yarn across more than 5 sts without twisting together to prevent long loops.

## HAT

With circular needle, using MC, cast on 84 sts. Place marker and join for working in the round. Work even in k1, p1 ribbing for 3".

**Inc Rnd:** \* K7, M1, rep from \* around – 96 sts.

**Note:** As you begin to decrease at top of chart, when there are too few sts to fit comfortably on circular needle, change to dpns, dividing sts onto 3 needles. Working in St st (knit EVERY rnd), follow chart until 43 rnds have been completed – 32 sts remain.

**Next Rnd:** With CC3, \* k2tog, rep from \* around – 16 sts. Knit 1 rnd.

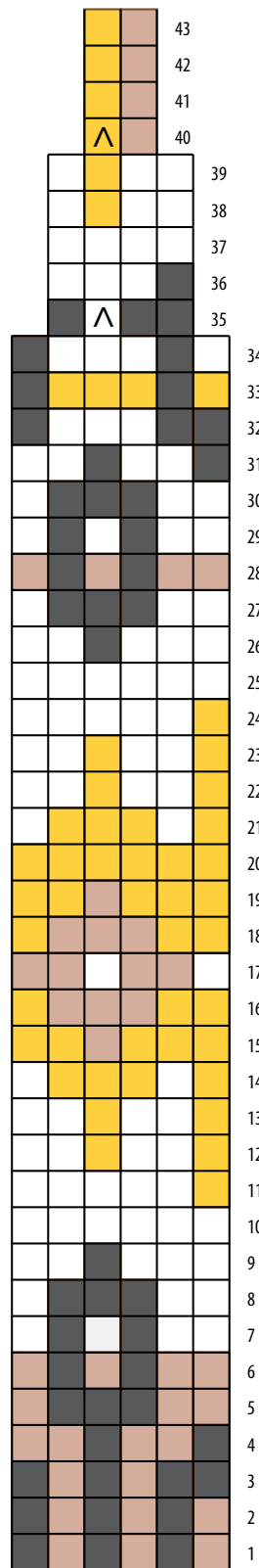
**Next Rnd:** With CC3, \* k2tog, rep from \* around – 8 sts. Break off yarn leaving an 8" long tail. Thread tail into tapestry needle and draw through all sts on needles. Pull up tightly and secure. Fasten off.

## FINISHING

**Pompon:** Using all 4 colors, make one 3½" pompon and sew to top of hat. Weave in all ends and block as desired.



MIRA HAT CHART



KEY TO CHART

- MC
- CC1
- CC2
- CC3
- ^ CDD

CHART NOTES

Work from right to left  
on ALL rnds.

## ABBREVIATIONS & TERMS

**beg:** beginning  
**CC:** contrasting color  
**cdd (centered double decrease):** Slip 2 together (as if to k2tog), knit 1, pass the 2 slipped stitches over.  
**cn:** cable needle  
**cont:** continue  
**dec:** decrease  
**dpn:** double pointed needles  
**est:** established  
**inc:** increase  
**K:** knit  
**k tbl:** knit through the back loop(s)  
**k2tog:** Knit 2 stitches together  
**k3tog:** Knit 3 stitches together  
**LH:** left hand  
**MC:** main color  
**M1:** Pick up horizontal strand between stitch just worked and next stitch from front to back, place on left hand needle, knit this stitch through the back (1 stitch increased).  
**M1L:** Work as for M1.  
**M1p:** Pick up horizontal strand between stitch just worked and next stitch from front to back, place on left hand needle, purl this stitch through the back (1 stitch increased).  
**M1pL:** Work as for M1p.  
**M1pR:** Pick up horizontal strand between stitch just worked and next stitch from back to front, place on left hand needle, purl this stitch through the front (1 stitch increased).  
**M1R:** Pick up horizontal strand between stitch just worked and next stitch from back to front, place on left hand needle, knit this stitch through the front (1 stitch increased).  
**p:** purl  
**p tbl:** purl through the back loop(s)  
**pat(s):** pattern(s)  
**pm:** place marker  
**pssso:** pass slip stitch over knit stitch  
**p2tog:** purl 2 stitches together  
**p2sso:** pass 2 slip stitches over knit stitch  
**p3tog:** purl 3 stitches together  
**rem:** remaining  
**rep:** repeat  
**RH:** right hand  
**rnd(s):** round(s)  
**RS:** right side  
**sl:** slip

**sm:** slip marker  
**SSK:** Slip 2 stitches knitwise, insert point of left hand needle through fronts of these 2 stitches and knit 2 together.  
**SSP:** Slip 2 stitches knitwise, transfer these 2 stitches back to left hand needle, purl 2 together through the back loops.  
**st(s):** stitch(es)  
**TBL:** through back loop(s)  
**tog:** together  
**w&t:** wrap and turn, a method of concealing a hole created in short row shaping. With yarn held in back, slip stitch to be wrapped purlwise, then bring yarn between needles to the front. Slip that same stitch back to the left needle, then bring the yarn to the back again. Turn your work. Unless otherwise indicated, each time you come to a wrapped stitch when working subsequent rows, slip the wrap back over stitch and onto needle, then work the wrap together with its accompanying stitch.  
**WS:** wrong side  
**wyib:** with yarn in back  
**wyif:** with yarn in front  
**yo:** yarn over  
**end on WS:** end having just completed a Wrong Side row.  
**end on RS:** end having just completed a Right Side row  
**Stockinette stitch (St st):** Knit 1 row, purl 1 row alternately when working on straight needles. The knit side is the right side of work. Knit EVERY round when working in the round on a circular needle.  
**Reverse St st (Rev St st):** Purl 1 row, knit 1 row alternately when working on straight needles. The purl side is the right side of the work. Purl EVERY round when working in the round on a circular needle.  
**GARTER ST:** Knit EVERY row when working on straight needles. Knit 1 round, purl 1 round when working on a circular needle.