

Love Berroco patterns? Sign up for our **KnitBits®** newsletter.

Free Pattern

skill level: Intermediate
Shown in size Small

sizes

Directions are for women's size X-Small. Changes for sizes Small, Medium, Large, 1X, 2X and 3X are in parentheses.

To Fit Bust Size: 32(35-38-41-44-47-50)"

finished measurements

Bust – 36(39-42-45-48-51-54)"
Length – 21¾(23-24-24-25½-25½-26½)" (Including lower edging)

Note: This garment was designed with approximately 4" of ease. Please take this into consideration when selecting your size.

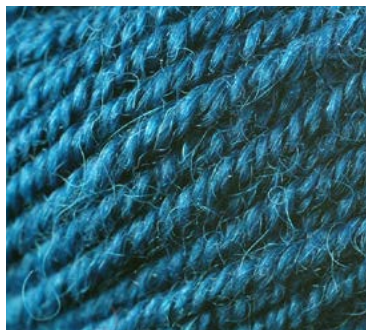
materials

8(9-10-11-12-13-14) Hanks **BERROCO COSMA** (50 grs), #2442 Serenity
Crochet hook, size 3.50 mm (E) OR SIZE TO OBTAIN GAUGE
29" Length circular knitting needle, size 6 (4.00 mm) OR SIZE TO OBTAIN GAUGE
Spare 29" circular needle, size 6 (4.00 mm) or smaller

gauge

24 sts and 32 rows = 4" in St st
21 dc and 11 rows = 4" in Panel Pat
TO SAVE TIME, TAKE TIME TO CHECK GAUGE

Berroco Cosma™



*Find this yarn
at your LYS*

Our supercharged store locator goes above and beyond the ordinary. Innovatively linked to our inventory system, search for a yarn in your area and you'll pinpoint LYS's that have a proven history of ordering that product. A handy listing of all of the Berroco yarns the store carries and easy access to driving directions are also right at your finger tips. *Find all yarns now.*

Don't forget to connect with us on social media!



NOTE: We recommend using yarns called for in our instructions. Every effort has been made to ensure that directions contained in this book are accurate and complete, however errors do occur. We cannot be responsible for variance of individual knitters, human or typographical errors.

All pattern PDFs are updated when corrections are made. In the event of finding an error, please make sure you've downloaded the most recent version.

NOTE

Front and back panels and all edgings are crocheted. The rest of the garment is knit in St st, sideways from the center panels out.

PANEL PATTERN (Multiple of 4 sts + 3)

Row 1 (RS): Dc in 4th ch from hook, dc in each ch across, turn.

Row 2: Ch 4 (counts as dc + ch 1), skip first 2 dc, * dc in next dc, ch 1, skip next dc, rep from * across to turning ch, dc in 3rd ch of turning ch, turn.

Row 3: Ch 3 (counts as dc), * dc in next ch-1 sp, dc in next dc, rep from * across, ending with last dc in 3rd ch of turning ch, turn.

Rep Rows 2 and 3 for Panel Pat.

EDGING PATTERN (Multiple of 8 sts)

Rnd 1: Ch 4 (counts as dc + ch 1), * skip next sc, dc in next sc, ch 1, rep from * around, sl st in 3rd ch of beg ch-4.

Rnd 2: Ch 3 (counts as dc), * skip next 2 ch-1 spaces, (3dc, ch 2, 3dc) all in next dc, skip next 2 ch-1 spaces, ** dc in next dc, rep from * around, ending last rep at **, sl st in top of beg ch-3.

Rnd 3: Ch 6 (counts as dc + ch 3), * sc in next ch-2 sp, ch 3, skip next 3 dc **, dc in next dc, ch 3, rep from * around, ending last rep at **, sl st in 3rd ch of beg ch-6.

Rnd 4: Ch 4 (counts as dc + ch 1), * dc in next ch-3 sp, ch 1, dc in next sc, ch 1, dc in next ch-3 sp, ch 1 **, dc in next dc, ch 1, rep from * around, ending last rep at **, sl st in 3rd ch of beg ch-4.

Rnd 5: Ch 3 (counts as dc), skip first dc, dc in each dc and ch-1 sp around, ending with sl st in top of beg ch-3.



Rnd 6: Ch 4 (counts as dc + ch 1), skip first 2 dc, * dc in next dc, ch 1, skip next dc, rep from * around, ending with sl st in 3rd ch of beg ch-4.

Rnd 7: Rep Rnd 3.

FRONT PANEL

With crochet hook, ch 75(83-87-91-95-99-99). Work 11(11-11-13-13-15-15) rows in Panel Pat, ending with Row 3. Fasten off.

BACK PANEL

With crochet hook, ch 91(99-103-107-111-111-115). Work 11(11-11-13-13-15-15) rows in Panel Pat, ending with Row 3. Fasten off.

BACK LEFT SIDE AND NECK

With RS facing, using circular needle, pick up and k 1 st in each dc along long edge of back panel – 91(99-103-107-111-111-115) sts.

Next Row (WS): [P6(8-7-8-7-6-6), M1p] 14(12-14-13-15-18-17) times, p to end – 105(111-117-120-126-129-132) sts. Work even in St st for 14 rows, end on WS. Cast on 4 sts at beg of the next 3 RS rows, using cable cast-on method – 117(123-129-132-138-141-144) sts. Work 1 row even on WS. Break off yarn and slip all sts to spare circular needle.

FRONT LEFT SIDE AND NECK

With RS facing, using circular needle, pick up and k1 st in each dc along long edge of front panel – 75(83-87-91-95-99-99) sts.

Next Row (WS): [P6(8-7-8-7-8-6), M1p] 12(10-12-11-13-12-15) times, p to end – 87(93-99-102-108-111-114) sts.

Neck Inc Row (RS): K to last 2 sts, M1R, k2 – 1 st inc'd. Working in St st, rep Neck Inc Row every RS row 8 times more, end on WS – 96(102-108-111-117-120-123) sts. Knit 1 row on RS. Cast on 21 sts at beg of the next WS row – 117(123-129-132-138-141-144) sts. Leave yarn attached.

LEFT SIDE AND SLEEVE

Joining Row (RS): K117(123-129-132-138-141-144) sts on needle, then with same needle, k117(123-129-132-138-141-144) sts of back left side and neck from spare needle – 234(246-258-264-276-282-288) sts. Beg with a p row, work even in St st until piece measures 7(7¾-8½-9-9¾-10-10¾)“ above sts picked up along front and back panels, end on WS. Bind off 76(78-84-82-84-82-85) sts at beg of the next 2 rows – 82(90-90-100-108-118-118) sts. Work even until piece measures 12(12-12-12½-12½-13-13)“ above last group of bound-off sts, end on WS. Bind off.

FRONT RIGHT SIDE AND NECK

With RS facing, using circular needle, pick up and k1 st in each dc along the other long edge of front panel – 75(83-87-92-95-99-99) sts.

Next Row (WS): [P6(8-7-8-7-8-6), M1p] 12(10-12-11-13-12-15) times, p to end – 87(93-99-102-108-111-114) sts.

Neck Inc Row (RS): K2, M1L, k to end – 1 st inc'd. Rep Neck Inc Row every RS row 8 times more, end on WS – 96(102-108-111-117-120-123) sts. Cast on 21 sts at beg of the next RS row – 117(123-129-132-138-141-144) sts. Work 1 WS row even. Break off yarn and sl sts to spare circular needle.

BACK RIGHT SIDE AND NECK

With RS facing, using circular needle, pick up and k1 st in each dc along the other long edge of back panel – 91(99-103-107-111-111-115) sts.

Next Row (WS): [P6(8-7-8-7-6-6), M1p] 14(12-14-13-15-18-17) times, p to end – 105(111-117-120-126-129-132) sts. Work even in St st for 15 rows,

end on RS. Cast on 4 sts at beg of the next 3 WS rows, using cable cast-on method – 117(123-129-132-138-141-144) sts. Leave yarn attached.

RIGHT SIDE AND SLEEVE

Joining Row (RS): K117(123-129-132-138-141-144) sts of back right side and neck, then k117(123-129-132-138-141-144) sts of front right side and neck from spare needle – 234(2246-258-264-276-282-288) sts. Complete as for left side and sleeve.

FINISHING

Sew side and sleeve seams.

Sleeve Edging: With RS facing, using crochet hook, beg at sleeve seam, work 72(80-80-88-96-104-104) sc around bound-off edge of sleeve (approximately 9 sc for every 10 knit sts), join with a sl st in first sc. Work Rnds 1 and 2 of Edging Pat. Fasten off.

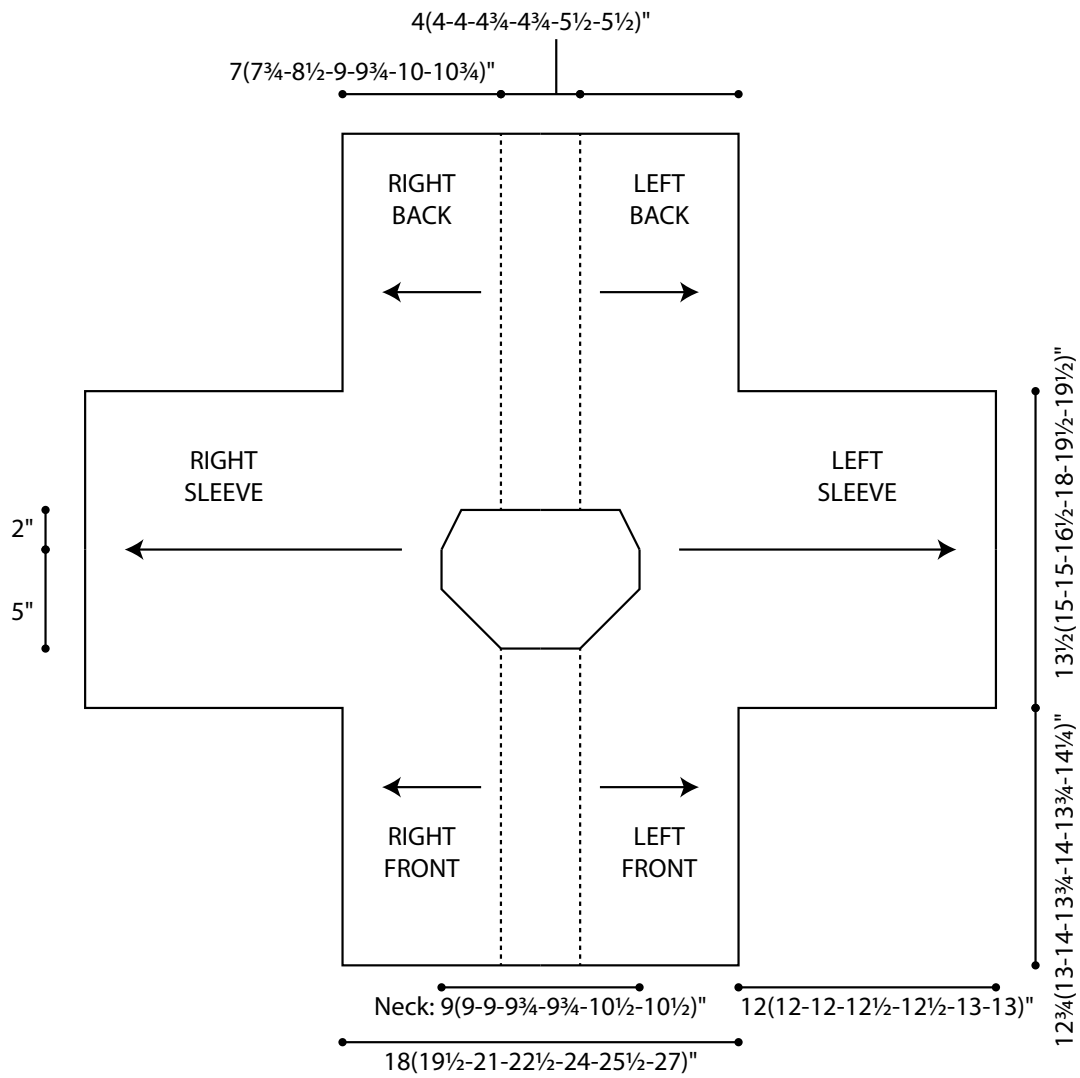
Body Edging: With RS facing, using crochet hook, beg at right side seam, * work 37(41-45-48-52-54-58) sc across lower front edge to beg of front panel, work 22(22-22-24-24-28-28) sc across lower edge of front panel, work 37(41-45-48-52-54-58) sc across lower front edge to left side seam, rep from * across lower edges of back and back panel, join with a sl st in first sc. Work Rnds 1 – 7 of Edging Pat. Fasten off.

Neck Edging: With RS facing, using crochet hook, beg at left shoulder, working in sc, work approximately 5 sc for every 6 knit sts, 2 sc for every 3 knit rows and 22(22-22-24-24-28-28) sc across front and back panels, join with a sl st in first sc – end with a multiple of 3 sc.

Rnd 2: Ch 3 (counts as dc), dc in each sc around, join with a sl st in top of beg ch-3.

Rnd 3: Ch 4 (counts as dc + ch 1), * skip next 2 dc, dc in next dc, ch 1, rep from * around, join with a sl st in 3rd ch of beg ch-4.

Rnd 4: Ch 3 (counts as dc), * dc in ch-1 sp, dc in next dc, rep from * around, join with a sl st in top of beg ch-3. Fasten off.



Note: schematic does not include crocheted edgings.

PANEL CHART

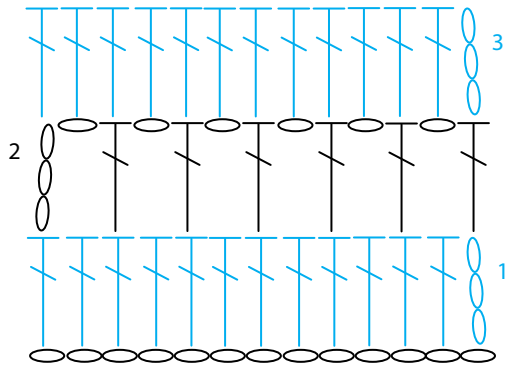


CHART KEY

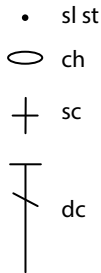
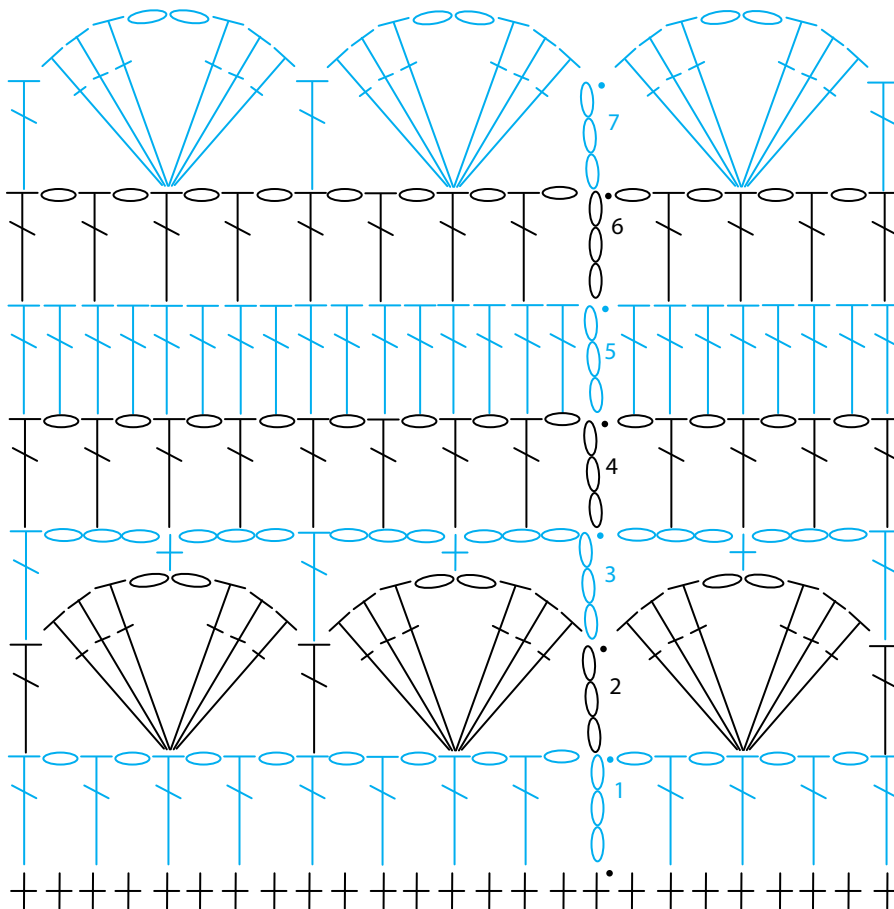


CHART NOTES

Panel Chart: Work RS rows from right to left, and WS rows from left to right.

Edging Chart: Work in rnds, with RS facing on all rnds, reading right to left. Beg of rnd is shown in middle of chart. On sleeves, work Rnds 1 and 2 only. On body, work Rnds 1-7.

EDGING CHART



ABBREVIATIONS & TERMS

Knit

beg: beginning

CC: contrasting color

cdd (centered double decrease): Slip 2 together, knit 1, pass the 2 slipped stitches over.

cn: cable needle

cont: continue

dec: decrease

dpn: double pointed needles

est: established

inc: increase

K: knit

k tbl: knit through the back loop(s)

k2tog: Knit 2 stitches together

k3tog: Knit 3 stitches together

LH: left hand

MC: main color

M1: Pick up horizontal strand between stitch just worked and next stitch from front to back, place on left hand needle, knit this stitch through the back (1 stitch increased).

M1L: Work as for M1.

M1p: Pick up horizontal strand between stitch just worked and next stitch from front to back, place on left hand needle, purl this stitch through the back (1 stitch increased).

M1pL: Work as for M1p.

M1pR: Pick up horizontal strand between stitch just worked and next stitch from back to front, place on left hand needle, purl this stitch through the front (1 stitch increased).

M1R: Pick up horizontal strand between stitch just worked and next stitch from back to front, place on left hand needle, knit this stitch through the front (1 stitch increased).

p: purl

p tbl: purl through the back loop(s)

pat(s): pattern(s)

pm: place marker

pssso: pass slip stitch over knit stitch

p2tog: purl 2 stitches together

p2sso: pass 2 slip stitches over knit stitch

p3tog: purl 3 stitches together

rem: remaining

rep: repeat

RH: right hand

rnd(s): round(s)

RS: right side

sl: slip

sm: slip marker

SSK: Slip 2 stitches knitwise, insert point of left hand needle through fronts of these 2 stitches and knit 2 together.

SSP: Slip 2 stitches knitwise, transfer these 2 stitches back to left hand needle, purl 2 together through the back loops.

st(s): stitch(es)

TBL: through back loop(s)

tog: together

WS: wrong side

wyib: with yarn in back

wyif: with yarn in front

yo: yarn over

end on WS: end having just completed a Wrong Side row.

end on RS: end having just completed a Right Side row

STOCKINETTE ST (St st): Knit 1 row, purl 1 row alternately when working on straight needles. The knit side is the right side of work. Knit EVERY round when working in the round on a circular needle.

Reverse St st (Rev St st): Purl 1 row, knit 1 row alternately when working on straight needles. The purl side is the right side of the work. Purl EVERY round when working in the round on a circular needle.

GARTER ST: Knit EVERY row when working on straight needles. Knit 1 round, purl 1 round when working on a circular needle.

Crochet

ch: chain

dc: double crochet

hdc: half double crochet

sc: single crochet

sl st: slip stitch

sp: space

tr: treble